

Public Document Pack



Janie Berry
Director of Legal Services
County Hall
Matlock
Derbyshire
DE4 3AG

Extension 38327
Direct Dial 01629 538327
Ask for Roy Ackrill

PUBLIC

To: Members of Council

Tuesday, 2 April 2019

Dear Councillor,

TRAINING SESSION – MOCK MEETING

Please attend a meeting of the **Council** to be held at **2.00 pm** on **Wednesday, 10 April 2019** in Council Chamber, County Hall, Matlock, DE4 3AG, the agenda for which is set out below.

This is a training session. Please bring with you your Council provided IT equipment.

Yours faithfully,

A handwritten signature in cursive script that reads 'Janie Berry'.

JANIE BERRY
Director of Legal Services

A G E N D A

1. Apologies for absence

To receive apologies for absence (if any)

2. Declarations of interest

Update from Monitoring Officer

3. Chairman's announcements

4. Minutes 1 - 16

To confirm the minutes of the meeting of the Council held on 12 September 2018

5. An Introduction to the AV System from VP Bastion
6. Presentation of the Derbyshire Song

This is to test the audio and visual display

7. General Discussion

This is to test the microphones

8. Public questions

This is to test how the procedure would work in terms of operation

9. Petitions 17 - 20

This is to test the voting system and rules of debate

To consider reports on the following:

- 10.1 Introduction to GDPR - Deputy Director of Legal Services
10.2 Pre-Application Planning Presentation - Extension of quarry workings 21 - 42

This is to test the viewing of plans from a visual perspective

11. Councillor questions

To consider Councillor questions (if any)

PUBLIC

Agenda Item 4

MINUTES of the meeting of the **DERBYSHIRE COUNTY COUNCIL** held on 12 September 2018 at County Hall, Matlock

PRESENT

Councillor G Wharmby (In the Chair)

Councillors T Ainsworth, R Ashton, K S Athwal, J Atkin, N Atkin, Mrs E Atkins, S A Bambrick, N Barker, B Bingham, Mrs S L Blank, J Boulton, S Brittain, S Bull, Mrs S Burfoot, K Buttery, Mrs D W E Charles, J A Coyle, A Dale, Mrs C Dale, J E Dixon, R Flatley, M Ford, Mrs A Foster, Mrs A Fox, J A Frudd, K Gillott, A Griffiths, Mrs L Grooby, Mrs C A Hart, G Hickton, R Iliffe, Mrs J M Innes, T A Kemp, T King, B Lewis, W Major, P Makin, S Marshall-Clarke, D McGregor, R Mihaly, C R Moesby, P Murray, G Musson, R A Parkinson, Mrs J E Patten, J Perkins, Mrs I Ratcliffe, B Ridgway, C Short, P J Smith, S A Spencer, A Stevenson, S Swann, D H Taylor, Mrs J A Twigg, M Wall, Ms A Western, Mrs J Wharmby and B Wright.

56/18 **APOLOGIES FOR ABSENCE** Apologies for absence were submitted on behalf of Councillors D Allen, Mrs L M Chilton, Mrs H Elliott and Ms B Woods.

57/18 **DECLARATIONS OF INTEREST** The Chairman reported that in respect of the motion presented by Councillor Ratcliffe relating to council tax issues for care leavers, all councillors were corporate parents.

The Director of Legal Services had discussed the issue with Councillor C Short, Chairman of the Standards Committee, and it had been agreed to grant a dispensation to all Elected Members to enable everyone to participate in the anticipated debate.

58/18 **CHAIRMAN'S ANNOUNCEMENTS** The following announcements were made:-

The Chairman:-

- (a) welcomed Helen Jones to her first Council meeting since her recent appointment to Strategic Director of Adult Social Care and Health;
- (b) introduced Jayne Briggs, Head of the Music Service who had attended the meeting to make a presentation of the Derbyshire song;

- (c) reminded Members that the Council's Civic Service would take place on Sunday 16 September at 3.00pm at the Chisworth Methodist Church, Chisworth, Glossop and invited all Members to attend;
- (d) reported that as this year marked the 100th anniversary of the end of the First World War, he was co-ordinating the purchase of poppy wreaths should any Members require them. Further details could be obtained from the Chairman or the Member's Secretaries;

59/18 **MINUTES OF THE ORDINARY COUNCIL MEETING** On the motion of Councillor G Wharmby, duly seconded,

RESOLVED that the minutes of the meeting of the Council held on 6 June 2018 be confirmed as a correct record.

60/18 **REPORT OF THE LEADER** Councillor B Lewis, Leader of the Council, referred to his report to the last meeting regarding the use of single use plastics and non-recyclable cardboard cups in County Hall. He was pleased to report that the use of these had now ceased and been replaced throughout County Hall by glassware and crockery.

61/18 **PUBLIC QUESTIONS**

(1) Question from Loreen Elliott to Councillor S A Spencer, Cabinet Member for Highways, Transport and Infrastructure

In the light of a recent cyclist's death at Cromford, how does the County Council intend to measure the effectiveness of its road repair system, in particular the pot hole repair programme?

Councillor Spencer responded as follows:

Thank you, Ms Elliott, for the question. Any death on Derbyshire's roads is a tragedy for the families and friends of those who have died. Events surrounding the tragic accident and subsequent death of Mrs Dumbleton will be determined by the Coroner's court in the future and it would not be appropriate for me to refer to any individual details of that particular incident.

With regard to the measures the Authority has put in place regarding potholes in particular, this administration made an extra £6m available to the Highways maintenance funds at the beginning of our administration and, as a consequence of that investment in our 3,500 miles of roads, the normal pothole repairs on an average year is

between 20,000/25,000 repairs per annum. This year to-date in eight months, we have repaired 53,000 potholes, nearly 900 were repaired last week.

Obviously, there are always lessons to be learned by tragic incidents like the one that took place in Matlock, but we work to a laid down prescribed standard, national standard of inspection which highlights that we work within a framework that allows us to carry out those repairs within a specified timeframe.

We are at this moment in time, reviewing the methods we use for carrying out repairs to the highway. We are in the process of, and have been for some time, moving towards a more risk-based management system. The KPIs that we carry out on a regular basis identify the investment and the benefit by carrying out those repairs within the timeframes that we work to and all those details are available if you wish me to provide them to you at a later date.

The following supplementary question was asked:

I am no specialist but how do you prioritise then? Surely you don't use the number of complaints about a pothole? Do you use your own survey plus the number of complaints? How do you prioritise if you have to within your budget?

Councillor Spencer responded to the supplementary question as follows:

As I am sure you can appreciate, this is not an easy process to explain in a short period of time, but I am more than happy to discuss it with you after the meeting or even provide you with information in writing, but basically the highway network in Derbyshire is categorised in its requirement for attention, i.e. we have a hierarchical system of repair processes. Some of those repair processes have to be carried out within a thirty-two hour period. 92% of those that have to be carried out within that period, are carried out. Some of those are categorised into a five day period. 91% of those are carried out within that timeframe and some are given a twenty-eight day period to carry out those repairs, depending on the category of the road, the usage of the road and the intensity of traffic etc. That is why the Council at this moment in time is reviewing that process. That review on how we categorise roads has been going on for some months and I will explain it to you. For example, just because a road is not an A road does not mean it is not used on a regular basis, or it may have a material problem that means we need to categorise it differently, i.e. carry out the work more quickly or in a different way. There are a massive raft of national requirements and laid down specifications on timeframe and

inspection. We have officers travelling over the county all the time inspecting the highway network. Most of the repairs or the reports of potholes, for example, come from our staff. I don't know what the exact number is, but I would say over 80% of the potholes that require attention are reported by our own inspection teams who go out there and cover the highway network. The rest of them are reported by the public by telephone or by whomever, but fundamentally we have a laid down prescribed inspection regime which I am more than happy to discuss with you and I am sure one of the officers who deals with it in detail, will explain it in detail if you wish him to do so, but there is a laid down prescribed programme and I can only give you the assurance that we endeavour to make our roads here in Derbyshire as safe as they possibly can be within the budgetary constraints that we have available to us.

(2) Question from Graham Heaseman to Councillor S A Spencer, Cabinet Member for Highways, Transport and Infrastructure

In Old Blackwell Parish there are so far four dwellings which have been blighted by HS2 and the proposed Spur. These somewhat isolated homes are now empty, three have been so for several months with no visible signs of maintenance. Gardens are overgrown and guttering hanging off from one of the houses. These properties are now vulnerable and due to their uniqueness are unlikely to be easily rented out by HS2 who are the new owners.

The council taxpayers of our parish are feeling extremely uneasy about this situation, which will worsen as more blighted properties are purchased by HS2 and could remain empty for years. This is only the beginning for the parish and residents fear that vandalism, illegal squatting and worse could occur as a result of visible neglect in this quiet corner. Ours will not be the only area of the county suffering in this way.

Can we request that the County Council write to and maintain pressure on HS2 to keep these and other similarly affected properties within the county, maintained in good order and secure during the period of their legal responsibility of ownership?

Just because HS2 can, doesn't mean that they should.

Councillor Spencer responded as follows:

Good afternoon, Mr Heaseman, can I just explain to you the discussion we had a few weeks ago with regard to the Mitigation Board that we have set up here in the East Midlands. As you know, I chair that on behalf of the HS2 Strategic Board. We have done our best to

make sure that Mitigation Board is made up of local representatives of all the Boroughs, the counties and the areas that are directly affected by the impact of HS2's provision across the East Midlands.

I am urging people, and I will urge you the same today, I would urge you to use the mechanisms that we have in place. I had the discussion with Ann Syrett and Councillor Moesby from Bolsover about the mechanisms that we need to encourage to be used. The reason I say that, Mr Heaseman, is that the issues you articulate today, and I share your concerns I might add, the issues you relate to in your question today, many of those issues come under the remit of the Borough Council, Housing, Planning, Environmental Health, just three examples, and many of those issues can be addressed at a very local level. We are in discussion with our Borough Council colleagues and our colleagues across the East Midlands, about how we are going to finance the Mitigation Board and deal with the bigger strategic issues, but when it comes to local issues such as this those, questions are better placed within the environment that they as I say are being generated within.

Now I would suggest in this particular instance, that HS2 have a responsibility. I do know that they have set up a property company to deal with the land that they purchase on behalf of HS2 Ltd and the maintenance and upkeep of that land moving forward. I am not sure if you have raised this issue with HS2 Ltd? I will happily take your issue to the Mitigation Board and we will hopefully send a letter from the Mitigation Board. I am trying to set in place a laid down prescribed route that people can take if they have issues anything to do with mitigation, i.e. HS2 orientated, so if you would be kind enough, I would greatly appreciate you taking that route, because we can then clearly identify the concerns you have. We can present those to HS2 Ltd and we can have a paper trail that brings back an answer to you on the questions you are concerned about and also in that process, it will involve the District Council addressing your concerns from the outset because many of those concerns can be addressed locally through the tools that they have available to them.

The following supplementary question was asked:

I would like to say that two of these empty properties lie in a conservation area and should they be left to fall into unrecoverable disrepair, HS2 will undoubtedly press to demolish. The proposals for HS2b have been pushed back by twelve months before they are presented to Parliament and for Royal Assent and if a future Leader, or government, felt that the public mood was moving towards spending the projected £100bn on more pressing issues and halted this project, these and other properties would be lost forever, not to mention the families

who need not have had their homes compulsorily purchased.

Would the Councillor agree with me, that this is a prime example of why representatives of community groups should be co-opted onto the East Midlands' Council HS2 Strategic Board? This type of issue would not be heard and HS2 would continue without consideration unless community groups raise them.

I also mention that I wrote to you on the 27 June asking for an update on progress within the East Midlands Council's HS2 Strategic Board following our meeting with you with my colleague Tony Mellors.

Councillor Spencer responded to the supplementary question as follows:

I accept there are many groups across the whole of the East Midlands who have concerns about the impact of HS2 on their communities and we have done our best, the joint representatives of the HS2 Strategic Board have done their best, to put in place a system that allows you to make representations at a point. That will continue to be reviewed and discussed on whether it works effectively, works efficiently, but it will only work if people use it as I have articulated to you earlier on today.

With regard to the blight that is caused by the proposals, my understanding is, today in actual fact, I was informed that the Environmental Impact Assessment has been delayed by a month so we will not have that available to us in the very near future, I think it will be mid-October. That will indicate quite clearly many of the issues you have articulated today, and I am sure that the Mitigation Board as a consequence of that report, will have a considerable amount of work to do.

The Lavalin Report that we commissioned initially to give us an over-arching picture of the issues related to mitigation for HS2, is still on the table and we are working through that. We are discussing the issues. We are trying to set up some sort of funding arrangement between our partners, so we have finances available to us to carry out studies, address concerns and issues that will be raised by local community groups.

I am not suggesting that the mechanisms we have in place are perfect, because they will never be perfect for everybody, but what I will say to you is this: we have to try and facilitate all the representative groups and allow them to have a say as best they can through their local Borough councillors. Those local Borough councillors sit on the Mitigation Board, and I am quite confident they will bring forward your

concerns as strongly as you do yourself through that Mitigation Board and hopefully we will be seen as a credible place for HS2 to have a conversation about serious issues of mitigation and how we are going to overcome them. There are Environmental Impact Assessments; there are business issues; commercial issues; personal issues for properties such as you are talking about. We have stately homes; National Parks. The list is endless, and I haven't got all the answers. All I can do as the Chair of that Board, is make sure we make those representations as clear as possible and give you as many answers as we possibly can.

I have nothing more to report to you other than the issues I spoke to you about back in June because we were due to have another meeting of the HS2 Strategic Mitigation Board on the 19th of this month which has had to be cancelled because many of the members of that Board are unavailable on that date, so that is being rearranged but I will happily let you know when that is. I will hopefully be able to give you some feedback from the issues you have articulated today in due course when we have written to the HS2 Board.

(3) Question from Vaughan Morris to Councillor S A Spencer, Cabinet Member for Highways, Transport and Infrastructure

Plans are progressing by Government-sponsored D2N2, (East Midlands Growth Strategy), Department for Transport, HS2 Ltd, Highways England, Network Rail, Environment Agency, DEFRA, Natural England, Canals and Rivers Trust, Wildlife Trusts. People and businesses in Long Eaton and area west of the River Erewash also need to be able to plan their own futures, and be sufficiently compensated if and when HS2b is actually going to happen.

In view of the recent publication of a £43,000,000,000 (billions) estimate by the Head of National Infrastructure Commission (NIC) for improved connectivity to HS2 along the whole of its route, how does Derbyshire County Council's role as Highways Authority for Long Eaton and the area West of River Erewash, (through infrastructure improvement planning or advisory work) influence the wider plans being made for the area, and have any DCC infrastructure plans contributed to the above NIC estimate of £43,000,000,000 (billions) ?"

Councillor Spencer responded as follows:

I will start with the last question first, if I may, because the County Council have not knowingly contributed to that figure as far as infrastructure investment is concerned. Whether that is the case or not remains to be seen, but we have not knowingly contributed to that figure in totality.

I recognise many of the concerns you have with regard to the investment in the Long Eaton area in particular. Undoubtedly if the proposals go ahead with regard to HS2's provision across Derbyshire, it is going to have an impact on that community. I am acutely aware of that and my colleagues from Erewash make me acutely aware of it virtually every day of the week.

We will continue to have dialogue with HS2 with regard to the mitigation that can be carried out with regard to the planning of that route and how it is designed. We will continue to talk to partners as far as the infrastructure investment is concerned, around the Toton hub, as we call it. I am acutely aware that the wish for the community of Long Eaton, is that they see some benefit from all of this and not all the disproportionate dis-benefit they face because having the infrastructure links and the road network around Long Eaton is critical for the recovery of the businesses and the communities who will be directly affected by the provision of HS2. That is something that has already been raised in the mitigation report that Lavalins put together on behalf of the HS2 Strategic Board.

I can give you an assurance that we will be doing our best to highlight those issues as far as investment is concerned and making sure that the views of local residents in your area, your vicinity (as I have done with Mr Heaseman who raises it with me on a regular basis), are heard. I can't give you a promise on what those answers will be, of course, because this is a scheme driven by Government and I remind people on a regular basis, that nine out of ten MPs support the HS2 programme. It is cross-Party, it is not politically affiliated it is a Government programme, but we as local elected members have a duty to listen to your concerns and raise those issues with HS2 Ltd and I can give you an assurance today that that will continue to be the case.

The following supplementary question was asked:

It was referred by Graham this delay to HS2, the legislation process. Is this an opportunity for Derbyshire County Council to contribute to a complete reassessment of the project's viability and importance now compared to post-financial crisis times, especially with many more urgent national and local pressures for funding?

Councillor Spencer responded to the supplementary question as follows:

I wish I had the resources to contribute in the way you wish we could Mr Morris, but what I would say to you is this: the position of Derbyshire County Council, as the position of all the Authorities in the East Midlands, has always been to support the electrification of the

Midland Mainline. That position has not changed and that position is still in place.

With regard to how we can influence the HS2 programme, I think that is probably outside our remit other than continuing to do what we do at this moment in time dealing with the mitigation issues, dealing with the impact, and hopefully getting the best we can for the communities that we represent as a consequence of the programme, the regeneration opportunities.

I recognise all the other impacts as well, the environmental impacts etc, but we have to accept that nine out of ten MPs in this country support this programme and, as a consequence of that, I have no doubt that the programme will continue to move forward. What the outcome will be in the end, I can't give you an answer on that, I am afraid, but I will give you an assurance today that your voice is being heard as far as representations and your concerns are concerned.

(4) Question from Howard Allan to Councillor S A Spencer, Cabinet Member for Highways, Transport and Infrastructure

Since Network Rail services serving the Toton hub will be substantial has NR advised DCC of its intentions? It is pertinent to consider, since DCC liaises with the Highways Agency, how this will radically reduce availability of the two level crossing on the low level line? Or will NR abandon the low level line providing a corridor for a much needed relief road, Long Eaton - Sandiacre - Stanton regeneration site?

Mr Allan was not present at the meeting to ask the question and the Chairman stated that a written reply would be provided.

62/18 **PETITIONS** There were no petitions received.

63/18 **STATEMENT OF ACCOUNTS 2017-18 AND ANNUAL AUDIT LETTER 2017-18** The Director of Finance and ICT presented a report which contained the External Auditor's 'External Audit Report 2017-18' and the approved Statement of Accounts 2017-18 and Annual Audit Letter for 2017-18.

It is a requirement of the Accounts and Audit Regulations 2015, that the Director of Finance and ICT certifies the Council's pre-audit Statement of Accounts for the year ended 31 March 2018 by 31 May 2018, and that the Audit Committee approve the post-audit version before 31 July 2018.

The core financial statements included in the Statement of

Accounts were:

- Comprehensive Income and Expenditure Statement
- Expenditure and Funding Analysis
- Movement in Reserves Statement
- Balance Sheet
- Cash Flow Statement
- Pension Fund Accounts
- Annual Governance Statement

It was reported that the main changes from the previous Statement of Accounts for 2016-17, had been the reflection of a restructure of portfolios, with the Council reporting through seven Cabinet Member Portfolios during 2017-18.

Under the Local Audit and Accountability Act 2014 (Sections 25 to 28) and the Accounts and Audit Regulations 2015 (Regulations 10, 14 and 15), the Council's Statement of Accounts for the year ended 31 March 2018 and certain related documents, had been made available for public inspection from 1 June 2018 to 12 July 2018. No queries had been raised.

Subsequently, the Statement of Accounts had been submitted to the External Auditor, who had approved them. The External Auditor had then presented the 'External Audit Report 2017-18 to the Audit Committee at its meeting on 26 July 2018, and the Pension Fund Accounts would be presented to the Pensions and Investment Committee on 31 October 2018.

The External Auditor had again acknowledged the well-established and strong accounts production process, the high standard of accounts, the quality of supporting working papers and the responsiveness of the finance teams during the audit. Certain audit adjustments and actions had been required and these were detailed in the report.

In addition, the External Auditor was required to present an Annual Audit Letter to Members and officers of the Council and a copy of this letter was appended to the report.

On the motion of Councillor B Lewis, duly seconded,

RESOLVED to note the report on the approved Statement of Accounts 2017-18, the External Auditor's 'External Audit ISA 260 Report 2017-18' and the Annual Audit Letter 2017-18.

64/18 STRATEGIC DIRECTOR ADULT SOCIAL CARE AND HEALTH – NOTIFICATION OF APPOINTMENT The Strategic Director of Commissioning, Communities and Policy presented a report which sought ratification for the appointment to the post of Strategic Director, Adult Social Care and Health.

At its meeting on 6 June 2018, the Council had authorised the Appointments Committee, as permitted within the Council’s Constitution, to make the appointment to the post of Strategic Director Adult Social Care and Health and the statutory role of Director of Adult Social Services. Council had considered that it would not be in either the Council’s or the successful applicant’s interest, to delay approval for the appointment to this post until September 2018, as the previous postholder had left the role due to retirement in July.

Following a competitive recruitment process, Helen Jones had been selected for appointment and had commenced in the role on 27 August 2018.

RESOLVED to ratify the appointment of Helen Jones to the post of Strategic Director, Adult Social Care and Health with effect from 27 August 2018.

65/18 REPORT OF CABINET AND MEMBERS’ QUESTIONS ON THE REPORT Councillor B Lewis, Leader of the Council, presented a report on the decisions that had been taken at meetings of Cabinet held on 14 June and 26 July 2018.

No questions were raised on the report.

On the motion of Councillor B Lewis, duly seconded,

RESOLVED to note the report.

66/18 COUNCILLOR QUESTIONS There were no questions.

67/18 NOTICES OF MOTION Council considered the following Notice of Motions as set out below:-

(a) Notice of Motion received from Councillor I Ratcliffe:

“This Council notes that:

1. Last year young Derbyshire people left the care of the County Council and began the difficult transition out of care and into adulthood.
2. A 2016 report by The Children’s Society found that when care

leavers move into independent accommodation they begin to manage their own budget fully for the first time. The report showed that care leavers can find this extremely challenging and with no family to support them and insufficient financial education, are falling into debt and financial difficulty.

3. Research from The Centre for Social Justice found that over half (57%) of young people leaving care have difficulty managing their money and avoiding debt when leaving care.

4. The local authority has statutory corporate parenting responsibilities towards young people who have left care up until the age of 25.

5. The Children and Social Work Act 2017 places corporate parenting responsibilities on district councils for the first time, requiring them to have regard to children in care and care leavers when carrying out their functions.

This Council believes that:

1. To ensure that the transition from care to adult life is as smooth as possible, and to mitigate the chances of care leavers falling into debt as they begin to manage their own finances, they should be exempt from paying council tax until they are 25.
2. Care leavers are a particularly vulnerable group for council tax debt.

This Council, therefore, resolves:

To use the County Council's convening powers and expertise in corporate parenting to work with all council tax collecting authorities to exempt all care leavers in the county from council tax up to the age of 25, sharing any arising costs proportionately."

The motion was duly seconded.

An amendment to the motion was moved by Councillor A Dale, duly seconded, that the final paragraph of the motion be amended to read:-

"This Council, therefore, resolves:

(1) to acknowledge the County Council is already using its corporate parenting powers and expertise to work with all Council Tax Collecting Authorities towards achieving an exemption for Derbyshire care leavers in the county from Council Tax up to the age of 25; and

(2) to invite members of the Corporate Parenting Committee to monitor and report on the progress towards achieving the exemption.

The amendment to the motion was duly seconded and voted upon.

RESOLVED (1) to acknowledge the County Council is already using its corporate parenting powers and expertise to work with all Council Tax Collecting Authorities towards achieving an exemption for Derbyshire care leavers in the county from Council Tax up to the age of 25; and

(2) to invite members of the Corporate Parenting Committee to monitor and report on the progress towards achieving the exemption.

(b) Notice of Motion received from Councillor J A Coyle:

This Council notes that Derbyshire schools budgets will be cut by nearly £30million in the five years from 2015 to 2020. This is putting enormous strain on school staff and affecting the life chances of Derbyshire children.

This Council resolves to:

- write to the Prime Minister, Chancellor of the Exchequer and the Secretary of State for Education demanding that these damaging cuts are halted in the Autumn Budget
- write to Derbyshire MPs requesting their support in persuading government to cease these cuts
- write to all Derbyshire schools informing them of this resolution and requesting that they also lobby for the cuts to be halted.

The motion was duly seconded.

Councillor Coyle's motion was put to the vote and declared to be LOST. At the request of at least five Members, a recorded vote was taken and recorded as follows:-

For the motion (24) Councillors Mrs E Atkins, S A Bambrick, N Barker, B Bingham, Mrs S L Blank, S Brittain, Mrs S Burfoot, Mrs D W E Charles, J A Coyle, Mrs C Dale, J E Dixon, J A Frudd, K Gillott, Mrs J M Innes, S Marshall-Clarke, D McGregor, R Mihaly, C R Moesby, Mrs I Ratcliffe, B Ridgway, P J Smith, M Wall, Ms A Western and B Wright.

Against the motion (36) Councillors T Ainsworth, R Ashton, K S Athwal, J Atkin, N Atkin, J Boulton, S Bull, K Buttery, A Dale, R Flatley, M Ford, Mrs A Foster, Mrs A Fox, A Griffiths, Mrs L Grooby, Mrs C A Hart, G Hickton, R Iliffe, T A Kemp, T King, B Lewis, W Major, P Makin, P Murray, G Musson, R A Parkinson, Mrs J E Patten, J Perkins, C Short,

S A Spencer, A Stevenson, S Swann, D H Taylor, Mrs J A Twigg, G Wharmby and Mrs J Wharmby.

Abstained (0)

(c) Notice of Motion received from Councillor B Lewis:

Across the East Midlands, Councils of all sizes and scales are facing significant on-going budget pressures and recognise there is a need to work together to find solutions to ensure we deliver services for the public benefit on a more efficient footprint. Upper tier Councils, including cities, have been exploring the idea of an East Midlands Strategic Alliance, which has the potential to deliver savings, transform Council services, deliver jobs and growth and therefore business rates uplift, and most critically ensure that our collective and single voice is powerful to call for more infrastructure investment across the region.

This Council resolves to explore and support, in principle, a Strategic Alliance comprised of East Midlands upper tier Authorities, LEPs and Chambers of Commerce. This will:

- Deliver further jobs and economic growth benefiting the economy by focusing resources and developing co-ordinated strategies by all the partner organisations across the region to underpin the work of the Midlands Engine.
- Develop a co-ordinated strategy and approach to lever-in Government investment in areas such as infrastructure, transport and ensuring, by working with all partners, the ambitious housing targets for the region are delivered.
- Allow Local Authorities across the region to further explore shared services and delivery, where prudent, and to look at new more efficient ways of delivering Council services to ensure best value for money for council taxpayers.
- Explore closer working and efficiencies with other services and partners such as the police, the fire authorities, health partners, including CCGs, the ambulance service and others.

This Council notes that in Derbyshire, our approach will focus on working with all partners, including businesses and relevant organisations such as Midlands Engine, Midlands Connect, HS2, East Midlands Airport, regional universities and FE colleges, Derbyshire Economic Partnership, and District and Borough Councils by utilising existing structures such as relevant boards, the Derby and Derbyshire

Joint Prosperity Board (D2) and East Midlands Councils and further dialogue where needed.

This Council agrees to mandate officers to do the necessary background work and to develop a business case to report to a future Cabinet meeting.

This Council recognises that there is a clear need and ambition by all concerned to work in a more focused and co-ordinated way to deliver a Strategic Alliance to overcome significant lack of investment in infrastructure and services across the East Midlands and ensure the region has a clear and powerful voice.

RESOLVED to (1) explore and support, in principle, a Strategic Alliance comprised of East Midlands upper tier Authorities, LEPs and Chambers of Commerce which will:

- Deliver further jobs and economic growth benefiting the economy by focusing resources and developing co-ordinated strategies by all the partner organisations across the region to underpin the work of the Midlands Engine.
- Develop a co-ordinated strategy and approach to lever-in Government investment in areas such as infrastructure, transport and ensuring, by working with all partners, the ambitious housing targets for the region are delivered.
- Allow Local Authorities across the region to further explore shared services and delivery, where prudent, and to look at new more efficient ways of delivering Council services to ensure best value for money for council taxpayers.
- Explore closer working and efficiencies with other services and partners such as the police, the fire authorities, health partners, including CCGs, the ambulance service and others;

(2) note that in Derbyshire, our approach will focus on working with all partners, including businesses and relevant organisations such as Midlands Engine, Midlands Connect, HS2, East Midlands Airport, regional universities and FE colleges, Derbyshire Economic Partnership, and District and Borough Councils by utilising existing structures such as relevant boards, the Derby and Derbyshire Joint Prosperity Board (D2) and East Midlands Councils and further dialogue where needed;

(3) agree to mandate officers to do the necessary background work and to develop a business case to report to a future Cabinet meeting; and

(4) recognise that there is a clear need and ambition by all concerned to work in a more focused and co-ordinated way to deliver a Strategic Alliance to overcome significant lack of investment in infrastructure and services across the East Midlands and ensure the region has a clear and powerful voice.

68/18 MINUTES OF MEETINGS OF COMMITTEES AND OTHER BODIES

On the motion of Councilor G Wharmby, duly seconded,

RESOLVED that the minutes of the following meetings be received:-

- (a) Regulatory – Licensing and Appeals Committee held on 21 May and 23 July 2018
- (b) Regulatory – Planning Committee held on 14 May, 9 July and 6 August 2018
- (c) Pensions and Investment Committee held on 13 June and 1 August 2018
- (d) Audit Committee held on 13 June and 26 July
- (e) Standards Committee held on 4 July 2018
- (f) Improvement and Scrutiny Committee – Places held on 16 May and 18 July 2018
- (g) Improvement and Scrutiny Committee – People held on 23 May and 4 July 2018
- (h) Improvement and Scrutiny Committee – Resources held on 31 May and 19 July 2018
- (i) Improvement and Scrutiny Committee – Health held on 21 May, 16 July and 13 August 2018
- (j) Derbyshire Police and Crime Panel held on 5 July 2018
- (k) Health and Wellbeing Board held on 12 July 2018

DERBYSHIRE COUNTY COUNCIL

COUNCIL

5 December 2018

Report of the Director of Legal Services

Petition Relating to the Elvaston Castle Country Park

1. Purpose of the Report

To consider the receipt of a petition relating to the Elvaston Castle Country Park.

2. Information and Analysis

The Council has received a petition containing 10,510 signatures relating to the Country Park. Since the petition contains more than 7,500 signatures and a Full Council debate has been requested, the Council's Petition Scheme provides that the petition organiser will be given five minutes to present the petition and it will then be debated by Members for 15 minutes.

The preamble to the petition reads as follows:-

"We, the undersigned, want Derbyshire County Council and Elvaston Castle and Gardens Trust to fully acknowledge and recognise the comments and feedback being outlined in points 1 - 5 below by way of a petition to the draft Master Plan for Elvaston Castle Country Park.

Whilst it is recognised and supported that Elvaston Castle Country Park needs to be financially sustainable, this petition;

1. Supports a complimentary and sympathetic development of the Castle and core buildings to retain the character of the Castle and Country Park, to benefit both the local community and visitors to Elvaston Castle Country Park in general. However;

2. Strongly objects and is opposed to the provision of new southern and

western access roads (particularly along the historic South Avenue), car parks, residential housing or any unsuitable developments i.e. caravan/camping/glamping on existing green spaces currently used for access to the countryside and wildlife, livestock grazing and the pursuit of active recreation and exercise by visitors.

3. Whilst we accept that Derbyshire County Council faces severe cut backs in government funding, we do not believe that developing areas of Elvaston Castle Country Park for residential housing provides an answer to long term sustainability and would seriously detract from the rural experience of a country estate. Alternative solutions (i.e. collect funding ideas from the public consultation and community fundraising) should be fully explored.

4. Strongly objects to the relocation of the showground and main car park or the provision of further vehicular access routes, despoiling further areas of Elvaston Castle Country Park. Existing roads and car parks should be developed with a view to improving their efficiency alongside the encouragement of active recreation by visitors to the park centre.

5. This petition encourages the maintenance of the sporting heritage of the estate, particularly in relation to equestrian activities and Elvaston Cricket Club, as these elements promote wellbeing as exemplified by 'Towards an Active Derbyshire 2016-2021' and 'South Derbyshire Open Space, Sport and Community Facilities Strategy April 2016', which both aim to increase the health and wellbeing of the community through the pursuit of such activities and active recreation.

What do you think the Council should do? We the undersigned call upon the County Council to make appropriate changes and amendments to the draft Master Plan for Elvaston Castle Country Park taking into consideration the comments and feedback.”

The Petition Scheme provides that where a petition relates to issues upon which the Cabinet is required to make the final decision, the Council will decide whether to make recommendations to inform that decision. Cabinet will be making the final decision on this issue in due course.

3. Considerations

In preparing this report the relevance of the following factors have also been considered: prevention of crime and disorder, equality and diversity, human resources, legal, environmental, health, property and transport considerations.

4. Background Papers

Elvaston Castle Petition containing 10,510 signatures.

5. Recommendation

The Council is asked to receive the petition relating to the Elvaston Castle Country Park.

**Janie Berry
Director of Legal Services**

This page is intentionally left blank

Presentation Title

A pre-application presentation to Derbyshire County Council members

on 27th September, 2012

relating to

Page 21

**a proposal to extend quarry workings at Ben Bennett Junior Limited's Grange
Mill Quarry
near Wirksworth, Derbyshire**

by

Martin Clayton (Geoplan)

Agenda Item 10b



Introductions

- Who are we?

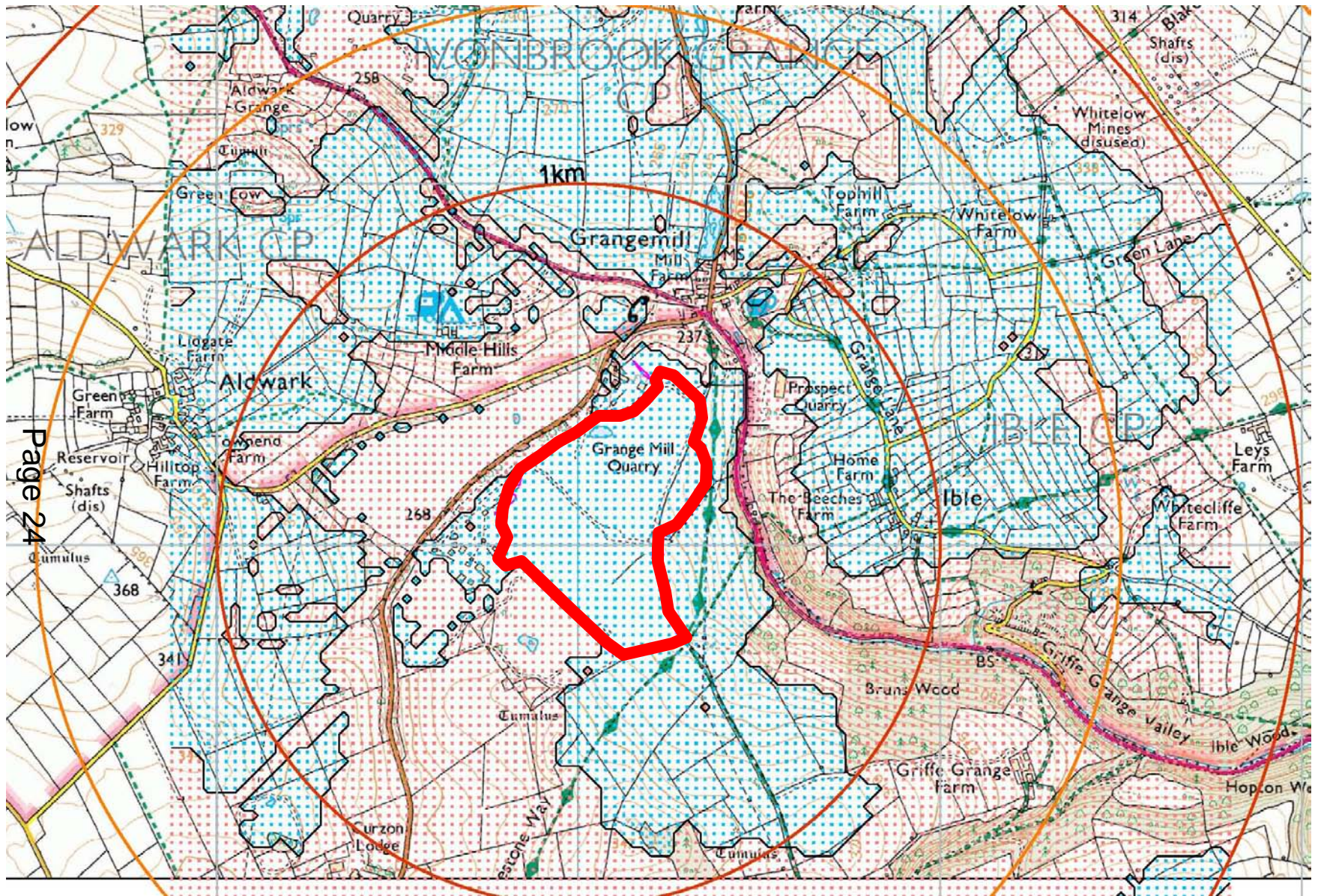
- Ben Bennett Jr Ltd – a local, privately owned independent company who have been operating Grange Mill Quarry for over 75 years. The company provides employment for up to 50 local people and supports numerous local small businesses in the area through services and materials it purchases.
- Geoplan – A small local Natural Resource Consultancy providing planning geological and environmental services to the quarrying industry. Instructed to prepare the planning application and Environmental Statement for the development proposals.



Grange Mill Quarry

- A unique Limestone quarry which provides a wide range of high purity high specification limestone products to the UK and overseas markets for use in the chemical, pharmaceutical and glass industries.
- The reserve at Grange Mill is over 98% Calcium Carbonate with very low lead content (in places less than 1ppm). Iron content is also low which is an important requirement in the manufacture of solar glass.
- The upper beds comprise lower grade materials which thin out dramatically towards the south east because of the topography of the site. The ratio of high purity limestone to lower grade limestone is 80%/20%. This is therefore NOT an application to release aggregate reserves. The company has no fixed contracts for the supply of aggregate.





Page 24

Plan 1 : Location Plan



Page 25

Quarry faces looking towards the proposed extension area

Summary Proposal

■ Proposal

- Extend the life of planning permission WED/590/389 (which permits the working of OS field 2913) from 2013 to 2042, in line with the remainder of the quarry
- Extend quarry workings laterally in a south easterly direction over an area of 3.3 Ha (8acres)
- Restoration of the application area to agriculture and nature conservation in keeping with restoration concepts already approved for the adjacent Longcliffe quarry workings.
- No change in the day-to-day operation of the site in terms of operational practices, plant and machinery, output, traffic, hours of working.

Page 26

Existing Site



000E

42400E

500E

424500E



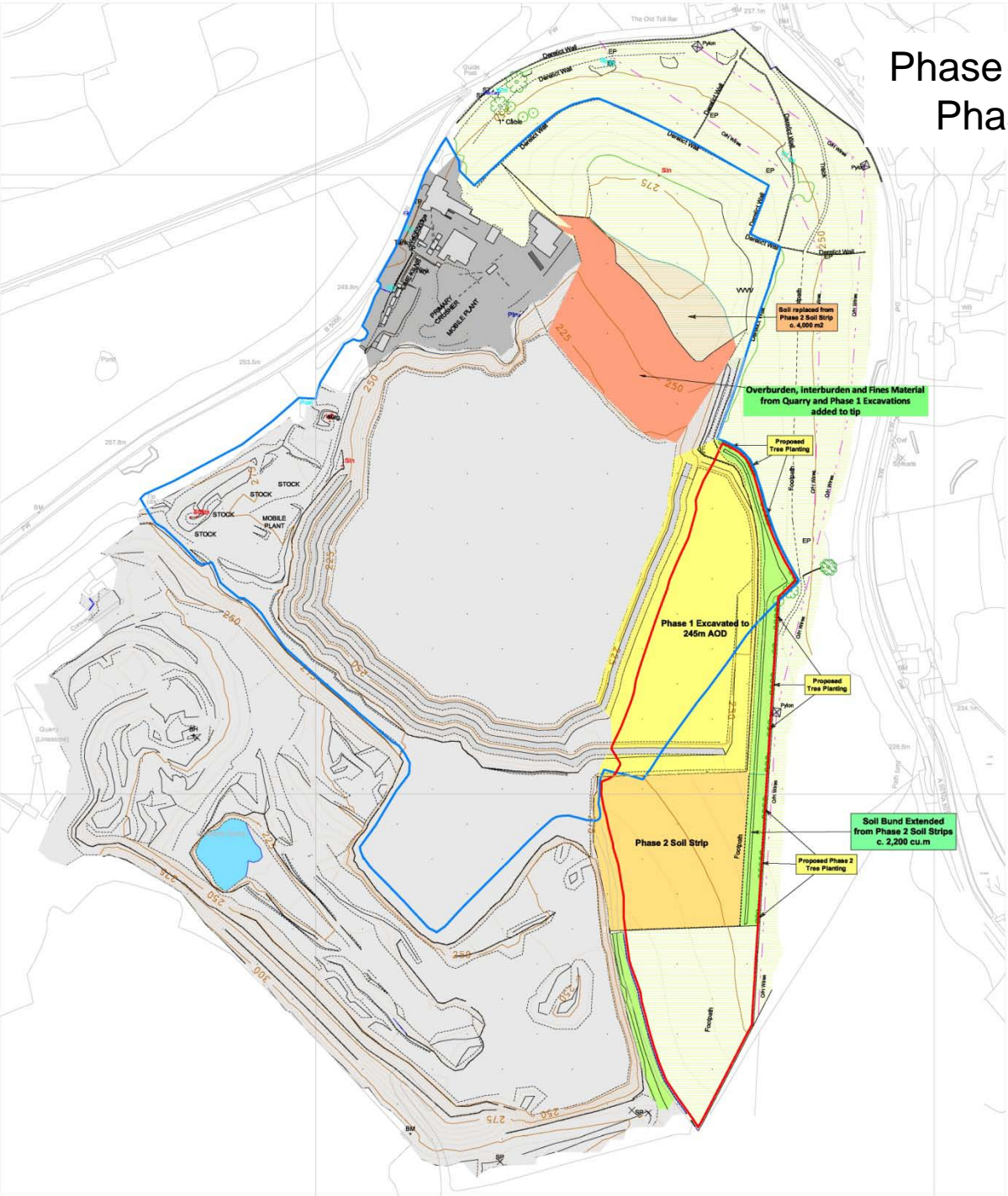
Page 28

The proposed extension area

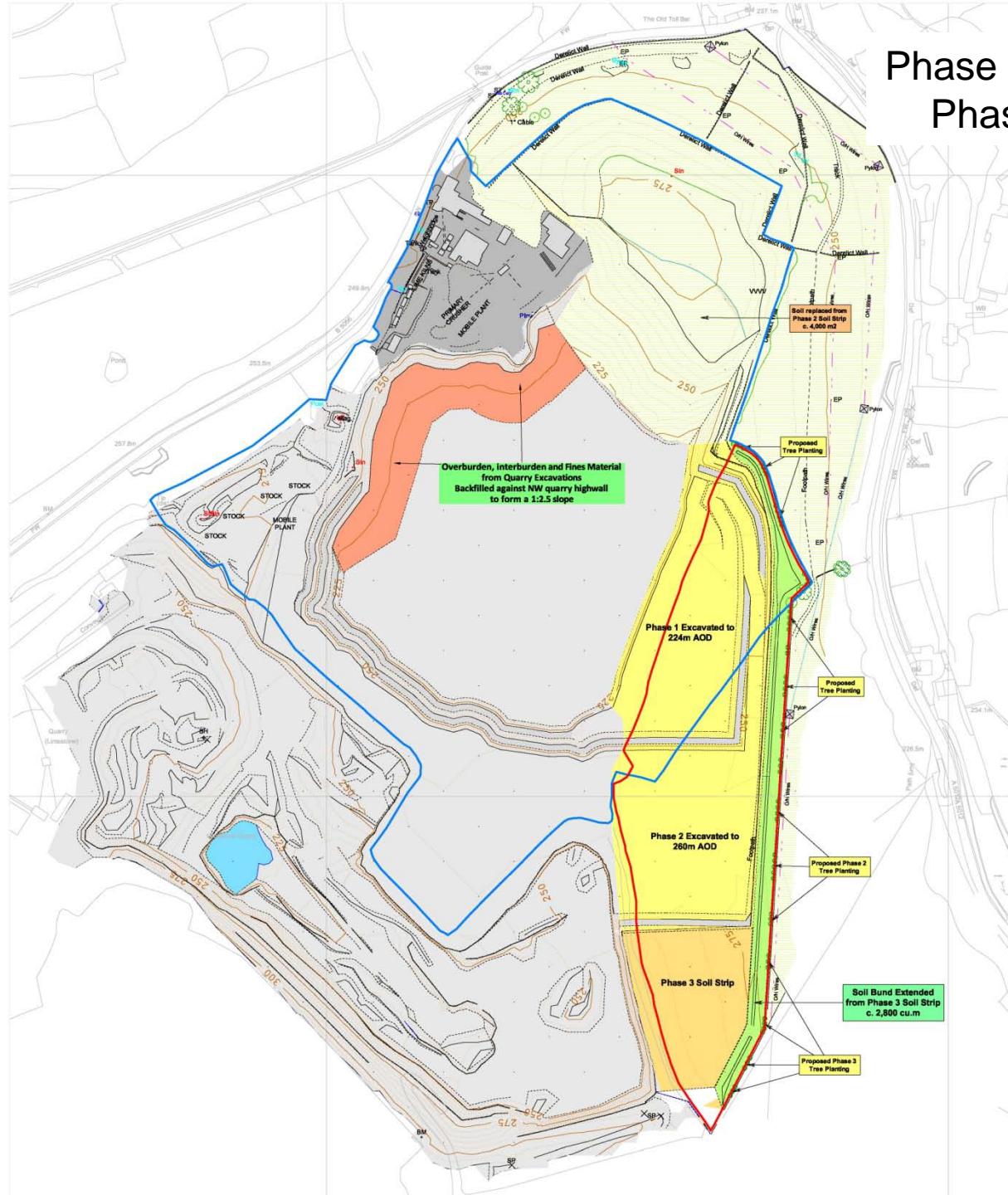
Phase 1 Soil Strip

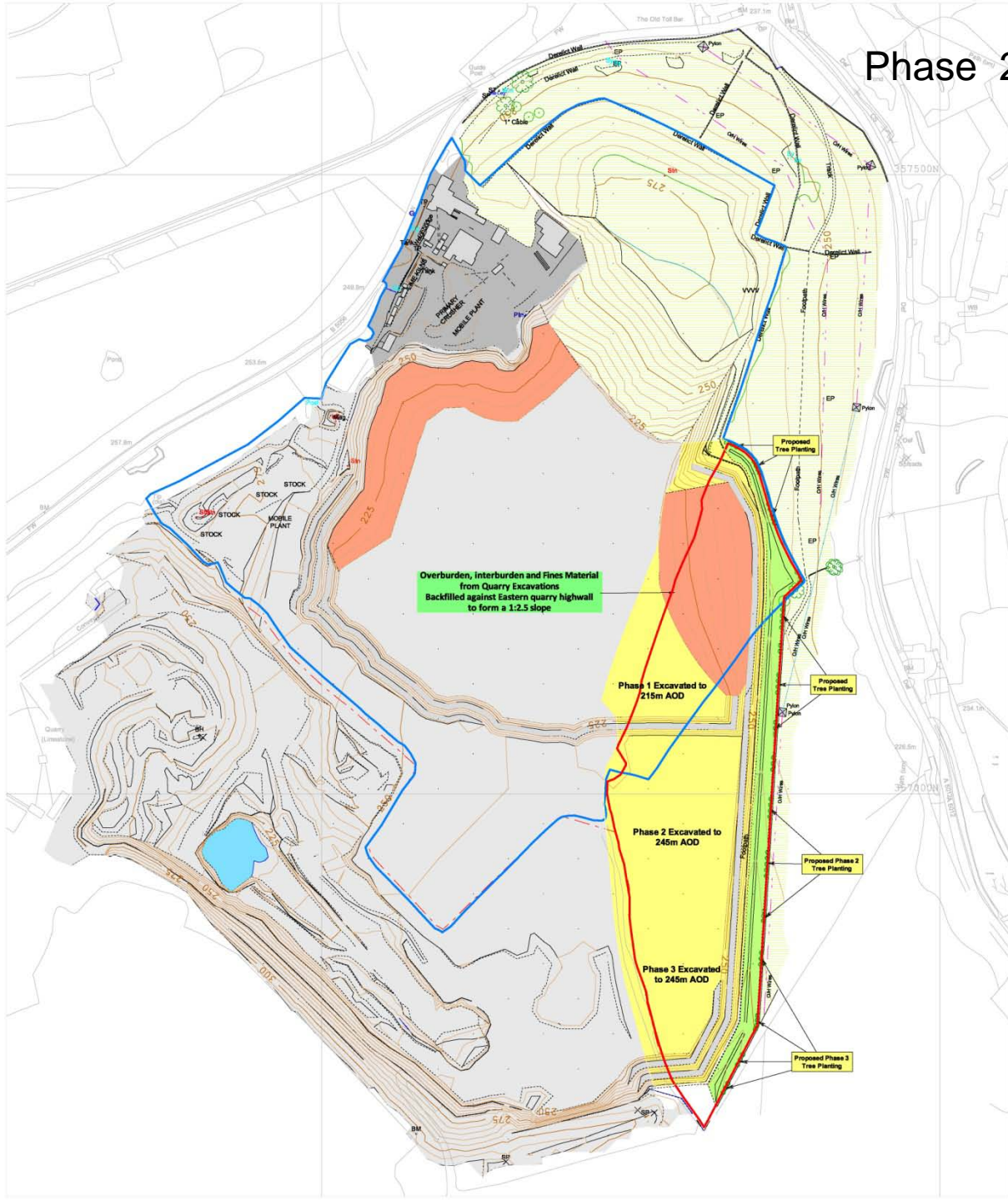


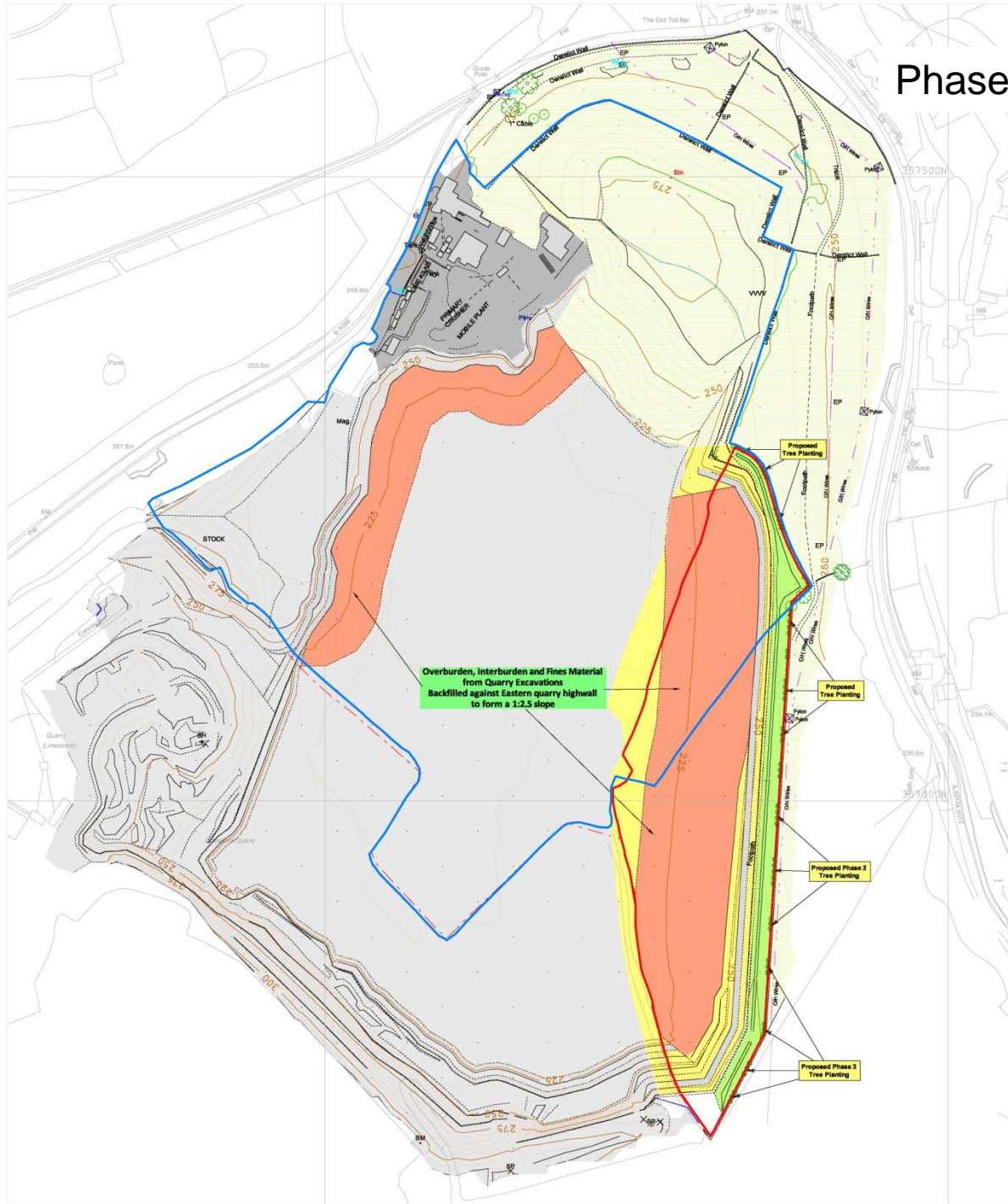
Phase 2 Soil Strip and Phase 1 Working



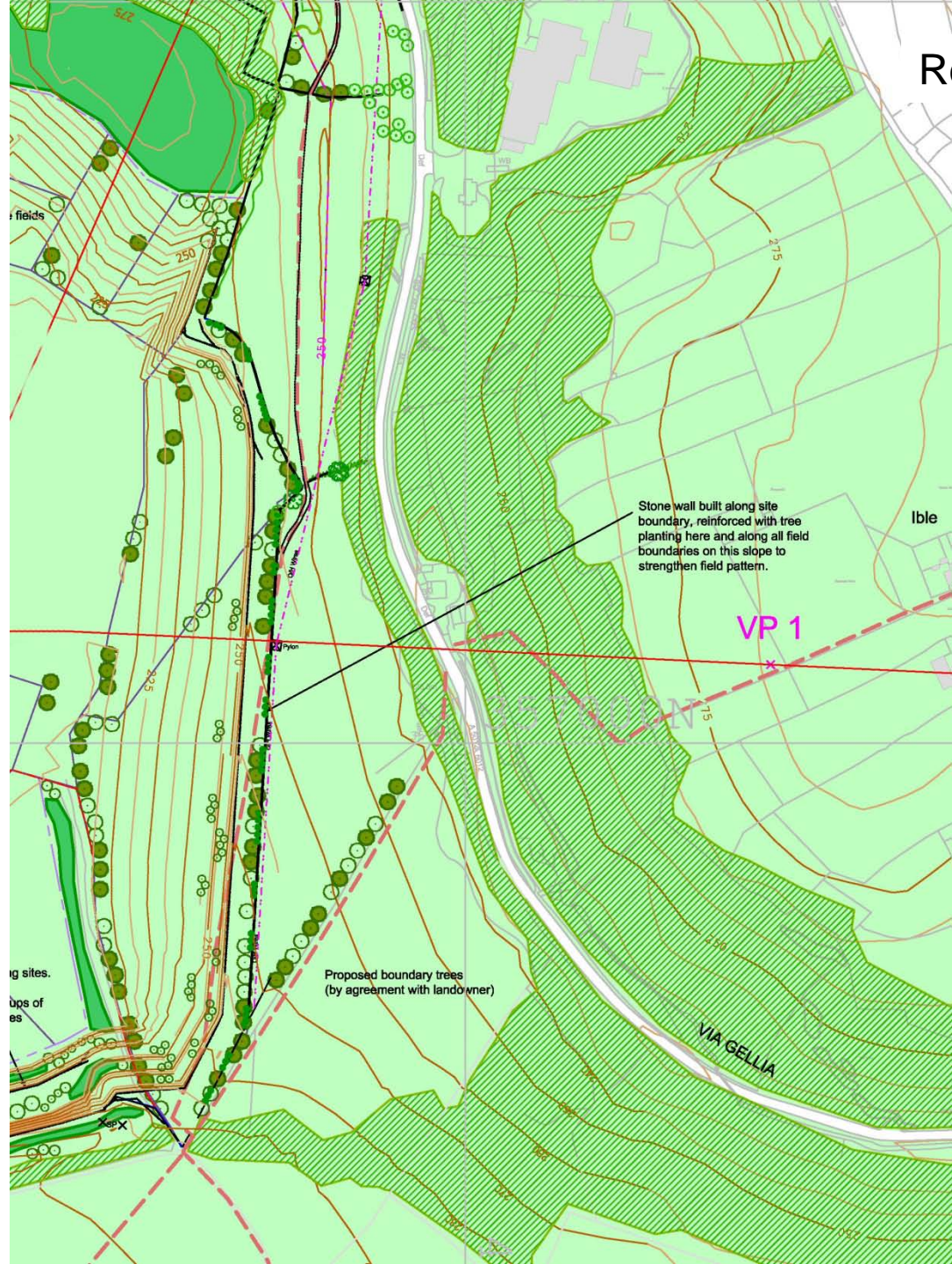
Phase 3 Soil Strip and Phase 2 Working





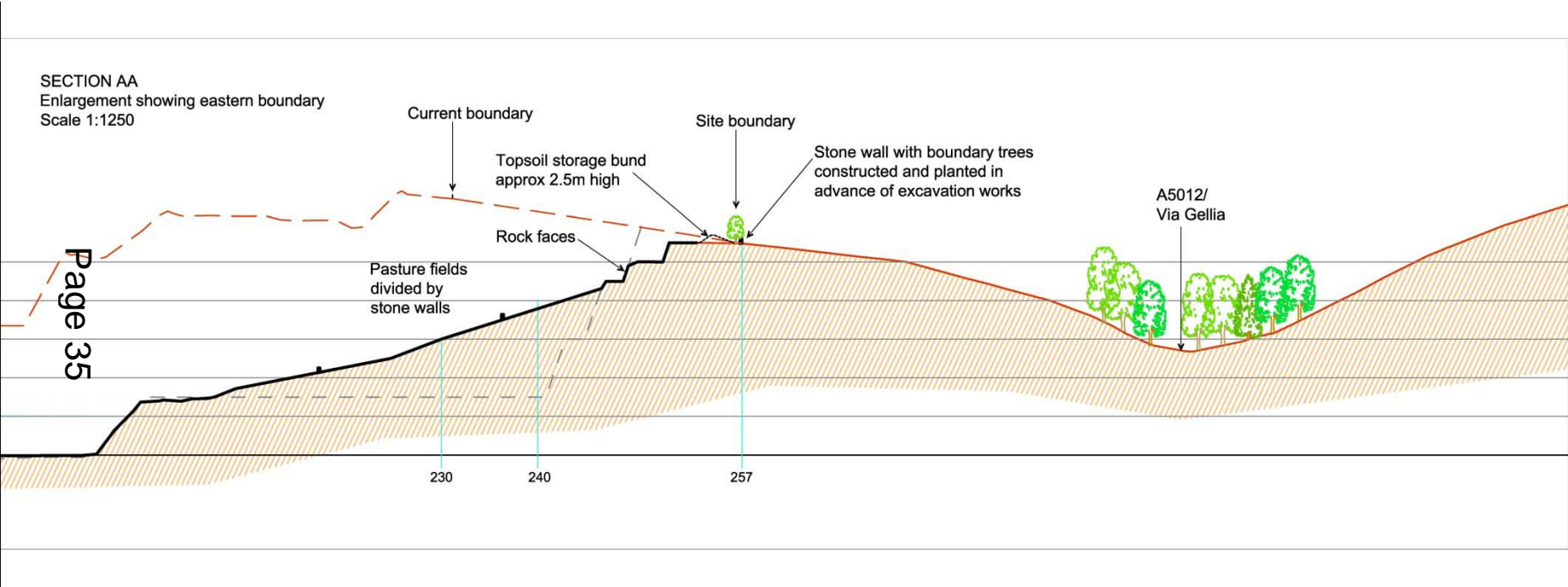


Phase 3 worked out



Restoration Cross Section

SECTION AA
Enlargement showing eastern boundary
Scale 1:1250



Environmental Statement

- Potential Key Impacts (without mitigation)
 - Visual Impact – Views from Ible village and PDNPA
 - Ecology – Peak District Dales SAC



Page
37

title

Viewpoint one.
From footpath below Ible.
Panorama

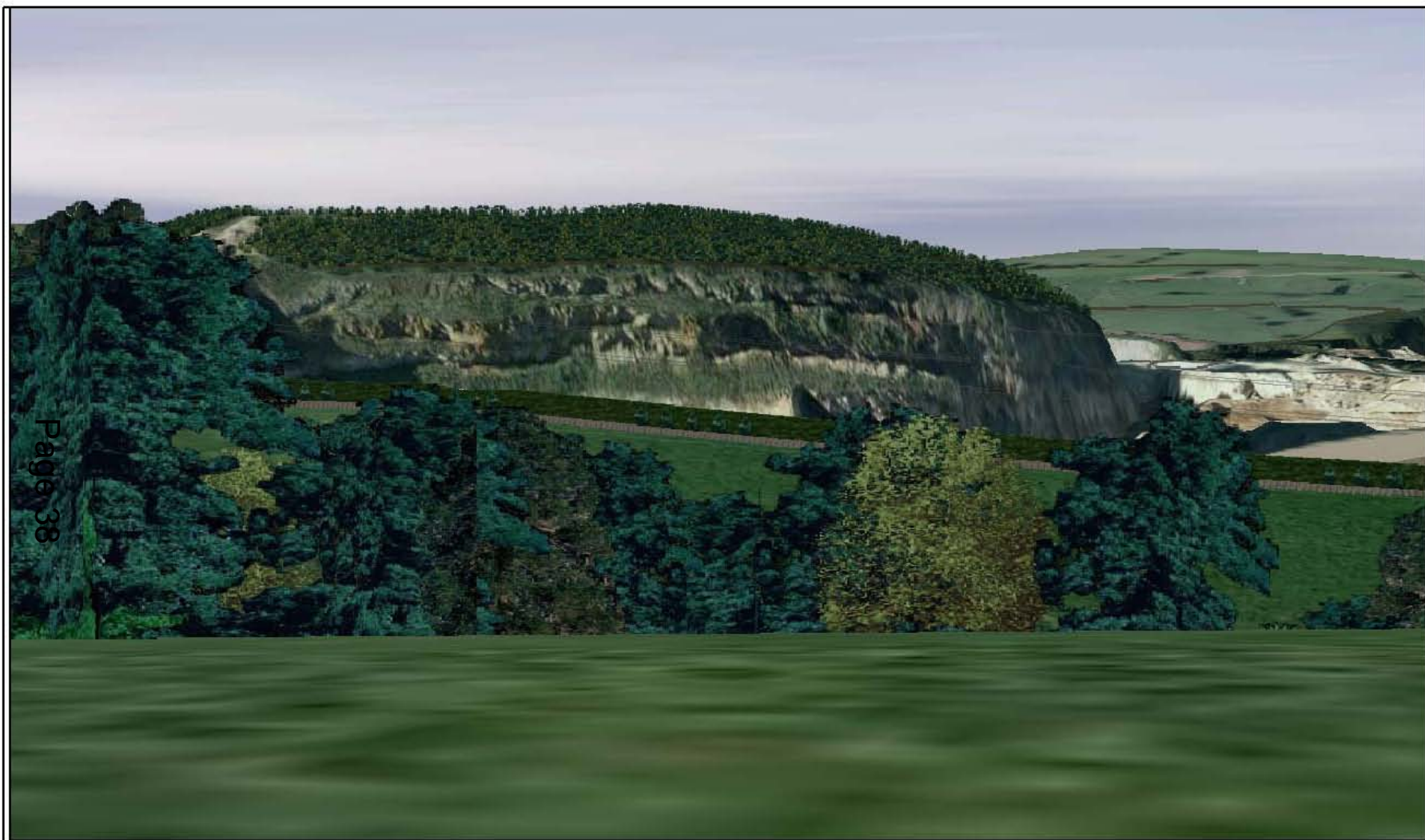
status

Existing view

details

GR SK 24706 57053
Elevation 280m
View bearing 266
Distance to extension area 397m

Horizontal field of view 90 degrees



Page 38

title

status

details

**Viewpoint one.
From footpath below Ible.
Photomontage**

Phase 3 excavation

**GR SK 24706 57053
Elevation 280m
View bearing 266
Distance to extension area 397m**

Policy

■ National Planning Policy Framework

- Facilitating the sustainable use of minerals
 - maximises the extraction of a mineral resource of local and national importance
 - economic benefits
 - adequate provision of industrial minerals
 - environmental protection

Page 39

■ Derbyshire Minerals Local Plan

- ‘Saved’ MLP Policy MP25 Industrial Limestone:
 - required to meet a proven need for materials, and
 - the development is designed to maximise the recovery of the particular materials required to supply that need



Influence of topography on mineral ratios

Conclusions

- Unique high purity/low contaminant carboniferous limestone deposit
- Established quarry operation and company employing 50 local people
- Application proposes a minor extension to maximise recovery of this valuable asset
- It is NOT an application to primarily release additional aggregate reserves
- Initial conclusions of Environmental Impact Assessment indicate no overriding constraints that cannot be accommodated through either appropriate design, mitigation and/or control through planning conditions
- Proposals are considered to accord with the policies of the NPPF and relevant 'saved' policies of the Derbyshire Minerals Local Plan



Thank you

